



Bedbug Management of *Cimex lectularius* (Bedbugs)

		Page 1 of 3
Manual Section:	Scope of Document:	Document Type: Policy and Procedure
Document Number:	Issue Date:	Review/Revision Date:

Guidelines for Prevention and Treatment of Bedbugs

Purpose: To identify and provide guidelines for the management of *Cimex lectularius* (bedbugs) at William Osler Health System.

Responsible Staff:

- Unit staff for identification purposes
- Public health unit
- Affected unit Management
- Environmental Services
- Environmental Services Management
- Occupational Health and Safety
- Pest Control Professional approved by William Osler Health System
- Facilities Management
- Infection Prevention and Control

Important Information: Bedbugs have three basic life stages; egg, nymph and adult. Young nymphs are the size of a poppy seed and mature adults are the size of an apple seed. Bed bugs tend to gather in places where a person sleeps. As bed bugs grow they leave behind hollow amber colored shells that they shed. Fecal spots are the result of bed bug digestion and can be found on patient’s clothes, linen and sometimes on wood or other surfaces. They may resemble a black magic marker dot. Bedbugs do bite and feed on human blood but can survive for 18 months without feeding. Bedbugs have never been shown to transmit disease to humans. Bedbugs are usually considered to be nocturnal but may present during the day in stressed conditions.

Bedbugs can be found in:

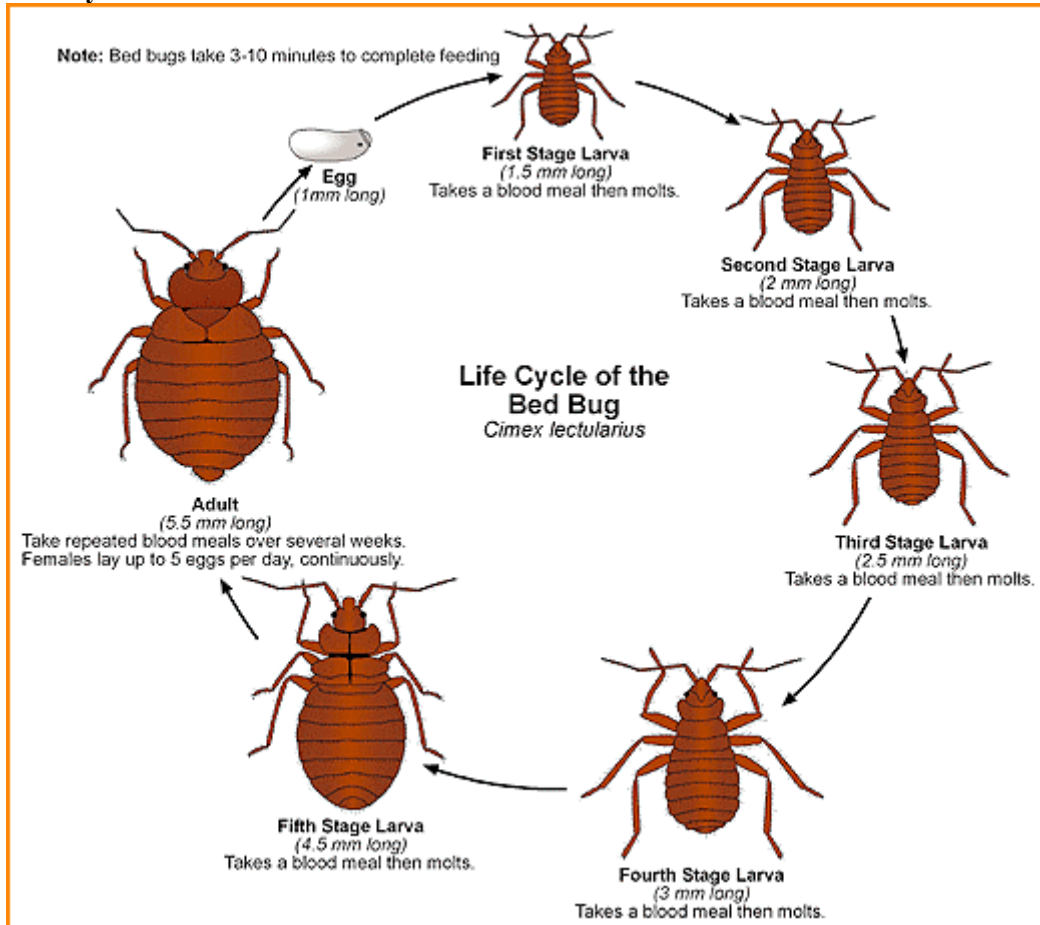
- Seams and creases of mattresses and chairs
- Under chairs, couches and beds
- Between cushions
- Between curtain folds
- Behind baseboards and around windows
- In televisions
- In purses and clothing

Procedure to Identify Bedbugs:

- Upon suspicion of bedbugs notify manager, Environmental Services and Infection Prevention and Control
- Any specimens of suspect bedbugs must be collected and presented to Pest Control Professionals and Public Health for positive identification
- Manager of Environmental Services will contact Pest Control Professional

- Patient will be placed on Contact Precautions if it suspected that his or her environment is contaminated with bedbugs
- Patient's personal belonging including clothes, purses, and wallets will be placed in a plastic bag and sent home with family.
- Patient to wear hospital laundered clothing only
- Precautions will be discontinued by Infection Prevention and Control provided that there is no evidence of bedbugs in the environment and patient does not have any bites
-

Life Cycle:



(Source: http://www.nysipm.cornell.edu/publications/bb_guidelines/files/bb_guidelines_nyc1.pdf)

Integrated Pest Management for controlling bedbugs:

- After suspicion of bedbug activity, Public Health Unit must be contacted
- After identification/confirmation of bedbugs, daily teleconferences will be initiated
- After identification/confirmation of bedbugs scrubs may be utilized and approved for use by unit manager and facilitated by Environmental Services
- Inspect all areas of suspected zone
- Put all suspect/confirmed patients belongings in plastic bag and patient will wear hospital gown
- Pest Control Professional will discuss options with team such as steaming, traps, dog sniffing detection methods, chemical (Dragnet) application before commencing treatment and must be approved by William Osler Health System
- Staff advised that scrubs are not to be worn home. They must be laundered by the facility. If nursing uniforms are worn they must be bagged and removed at the hospital and washed at home including use of dryer at high heat afterwards.

- Patients and families will be informed if they are from affected areas
- All media inquiries should be filtered through communications
- Fogging is not recommended as it may cause bedbugs to spread

Material Safety and Data Sheets (MSDS):

A MSDS data sheet will be requested from the pest management professional if there are any chemical applications and provided to Occupational Health and Safety.

If chemical treatment is applied the MSDS data must be observed to when patients and staff can re-enter area.

Supplies and Equipment:

- All furniture will be discarded and replaced if cracked or broken
- All furniture purchased will be vinyl and non-permeable
- There will be no untreated exposed wood in the facility
- All baseboards will be inspected by Engineering and Maintenance and replaced and sealed as appropriate to repair gaps or damaged baseboards.
- Carpet is not an acceptable floor covering
- All furniture identified as positive must be labeled as “dispose-do not reuse” and placed immediately in the garbage for disposal

How to Protect Staff and Patients

- Educate all staff and patients of affected areas only
- Cleaning will be done on isolated rooms before Integrated Pest Management may commence if the patient occupying the room is on precautions
- Minimize clutter in all patient and staff areas at all times
- Staff with any suspect bites must contact Occupational Health and Safety immediately and bedbug bites must be diagnosed by a physician

References:

<http://www.kznhealth.gov.za/environ/vector/bedbugs.htm>

http://www.nysipm.cornell.edu/publications/bb_guidelines/files/bb_guidelines_nyc1.pdf

<http://www.ci.portland.me.us/hhs/hhsbedbugsmanual.pdf>

http://medent.usyd.edu.au/bedbug/manage_policy_1ed_draft.pdf

http://www.toronto.ca/health/pdf/bedbugs_factsheet.pdf

Toronto Public Health fact sheet on bedbugs available at

http://www.toronto.ca/health/pdf/bedbugs_factsheet.pdf